

Chambers of HORROR



BARRELS ALWAYS CHECK YOUR BARRELS ARE CLEAR



SNOW IN THE MUZZLE



20 BORE PLACED IN A 12 BORE CHAMBER



FIBRE WAD LEFT BEHIND IN THE BARREL

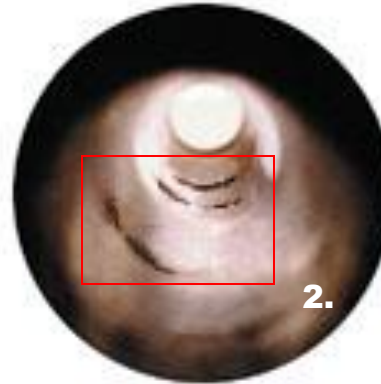


**FRACTURE IN THE BARREL
(DOUBLE DISCHARGE)**



MUD IN THE MUZZLE

FAULT FINDING



1. DENTS ON THE OUTSIDE

2. DENTS ON THE INSIDE

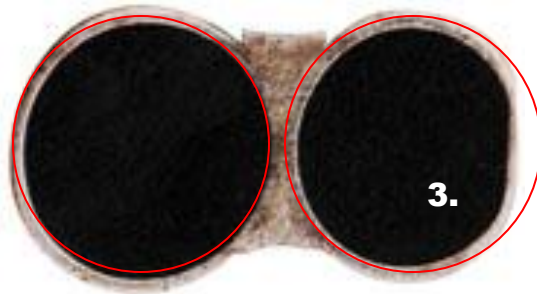
3. DAMAGE TO MUZZLE

4. CHAMBERS

5. PITTING

**OTHER PLACES TO CHECK
THE ACTION**

STOCK / FOREND



PROOF MARK PROOF MARK

ALL GUNS MUST BE IN PROOF

**ONLY THE PROOF HOUSE CAN CHECK
IF A GUN IS IN PROOF OR NOT**

A FEW THINGS TO CHECK FOR

DENTS

PITMARKS

CRACKS

CORROSION

LOOSE WELDING

LOOSE ACTION

PROOF MARKS

LONDON



BIRMINGHAM



12-70

NITRO PROOF-12 BORE-2 3/4 CHAMBER



12-70

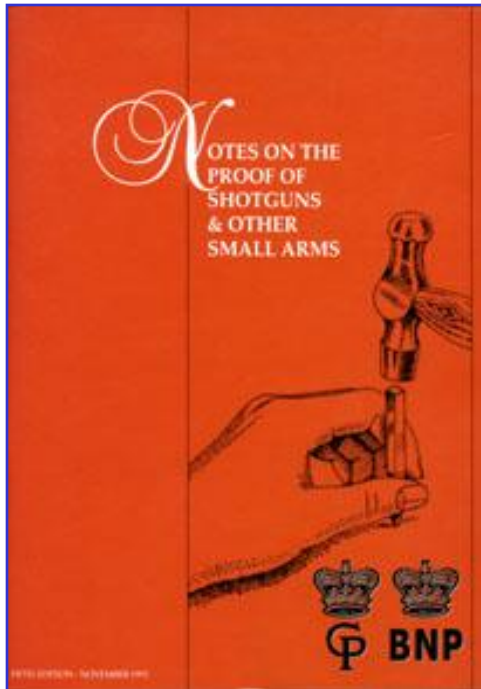
NITRO PROOF-12 BORE-2 3/4" CHAMBER

NOT
NITRO

BLACK
POWDER

Notes on the Proof of Shotguns & Other Small Arms

A copy can be purchased from either



**The Worshipful Company of Gunmakers of the City of London,
The Proof House,
48 Commercial Road,
London E1 1LP.**

or

**The Guardians of the Birmingham Proof House,
The Gun Barrel Proof House,
Banbury Street,
Birmingham B5 5RH**

Click on [your](#) browser back button to return home

